

Turbo II Air Hydraulic Pumps

▼ Shown left to right: PAMG-1102N, PATG-1102N, PARG-1102N, PATG-1105N



- High efficiency cast aluminum air motor for increased productivity
- Fully serviceable air motor assembly
- Reinforced heavy-duty reservoir for applications in tough environments
- New generation air saver piston with rugged one-piece design reduces air consumption and operating costs
- Return-to-tank port for use in remote valve applications
- Quiet – only 76 dBA with low air consumption of 12 scfm
- Operating air pressure: 25-125 psi, enables pump to start at extremely low pressure
- Internal pressure relief valve provides overload protection

▼ Easily operated by hand or by foot



Setting New Standards



RFL-102 Regulator-Filter-Lubricator

Recommended for use with all air pumps. Provides clean, lubricated air and allows for air pressure adjustment. Steel bowl guards are standard.



Large Reservoir Models

The Turbo II Air Pump is also available with a larger reservoir: **PATG-1105N, PAMG-1405N, and PARG-1105N.**

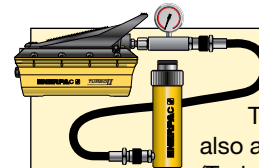


Hoses

Enerpac offers a complete line of high quality hydraulic hoses. To ensure the integrity of your system,

specify only genuine Enerpac hydraulic hoses.

Page: 112



Pump and Cylinder Sets

Turbo II pumps are also available as **sets** (Turbo II pump, cylinder, gauge, couplers and hose) for your ordering convenience.

Page: 54

Used with Cylinder	Usable Oil Capacity (in ³)	Model Number
Single-Acting	127	PATG-1102N*
	230	PATG-1105N
	127	PARG-1102N
	230	PARG-1105N
Double-Acting	127	PAMG-1402N
	230	PAMG-1405N

* Available as set. See note on this page.

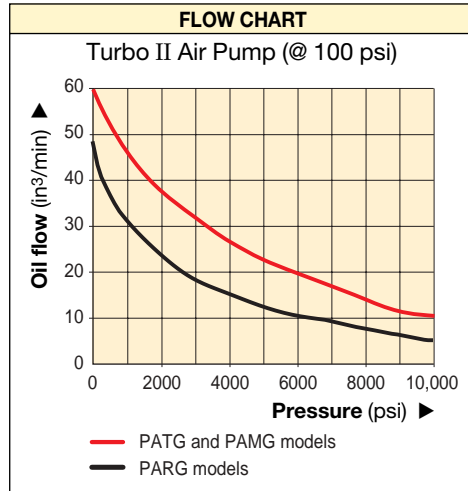
Turbo II Air Hydraulic Pumps



The PATG-models use a foot or hand operated treadle to control air and valve functions.

The PAMG-models use a treadle with a locking feature and a 4-way manual valve.

The PARG-models use a 15 foot pendant hose for convenient one man operation.



**PATG
PAMG
PARG
Series**



Reservoir Capacity:
150-305 in³

Flow at Rated Pressure:
10 in³/min

Air Consumption:
12 scfm

Maximum Operating Pressure:
10,000 psi

Pressure Rating (psi)	Output Flow Rate (in ³ /min)		Model Number	Valve Function	Air Pressure Range (psi)	Air Consumption (scfm)	Sound Level (dBA)
	No load	Load					
10,000	60	10	PATG & PAMG	Advance/	25-125	12	76
10,000	51 ¹⁾	6 ¹⁾		Hold/	25-125	12	76
10,000	48 ²⁾	5 ²⁾	PARG	Retract	25-125	8	76

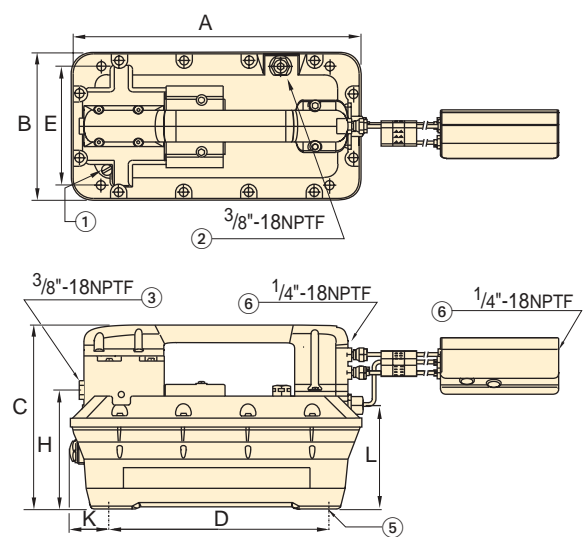
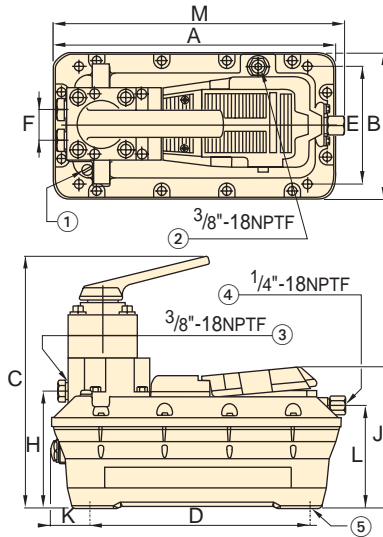
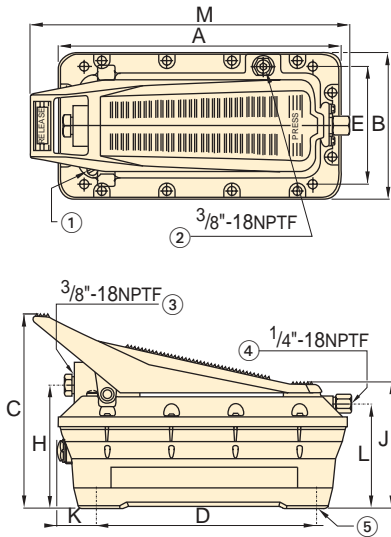
¹⁾ Air supply connected at pendant.

²⁾ Air supply connected at pump.

PATG-1102N and PATG-1105N

PAMG-1402N and PAMG-1405N

PARG-1102N and PARG-1105N



- ① Filtered "Permanent" Tank Vent
- ② Return-to-Tank/Auxiliary Vent/Fill Tank Port

- ③ Hydraulic Output
- ④ Swivel Air Input with Filter

- ⑤ 4 Mounting Holes for #10 thread forming screw. Max. depth into reservoir = .75"
- ⑥ Air Input Options

Dimensions (in)											Weight (lbs)	Model Number
A	B	C	D	E	F	H	J	K	L	M		
12.33	6.49	8.29	9.04	4.00	—	5.15	5.75	1.65	4.43	12.45	18	PATG-1102N*
15.60	7.92	8.22	9.04	4.00	—	5.08	5.75	3.28	4.41	—	22	PATG-1105N
12.33	6.49	7.88	9.04	4.00	—	5.15	—	1.65	4.43	—	22	PARG-1102N
15.60	7.92	7.88	9.04	4.00	—	5.08	—	3.28	4.41	—	26	PARG-1105N
12.33	6.49	10.50	9.04	4.00	1.42	5.23	6.00	1.65	4.43	12.60	24	PAMG-1402N
15.60	7.92	10.50	9.04	4.00	1.42	5.19	6.00	3.28	4.41	—	26	PAMG-1405N