

Air Hydraulic Pumps

17 cu. in./min. — Two-speed (PA17 Series)

Two-speed pump with rotary-style air motor. Generally recommended for cylinders up to 50 ton capacity.

PUMPS



Hoses, Fittings & Gauges
Pages 74-80

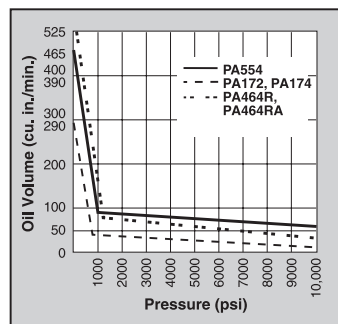
Cylinder/Pump Speed/Selection Chart
Page 178

Choosing The Right Pump
Pages 181-184

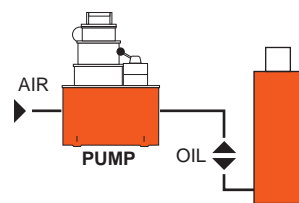
Pump Accessories
Pages 161-165

- Use where air is preferred source of energy, where electricity is unavailable or sparks are a concern.
- Two-speed operation for high speed cylinder advance.
- Durable two gallon thermoplastic reservoir. (Metal reservoir conversion kits are available.)
- Features air motor capable of starting under full load.

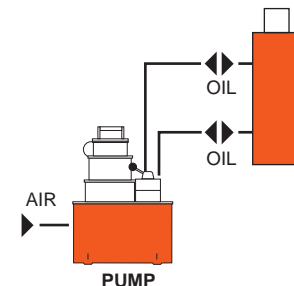
PERFORMANCE

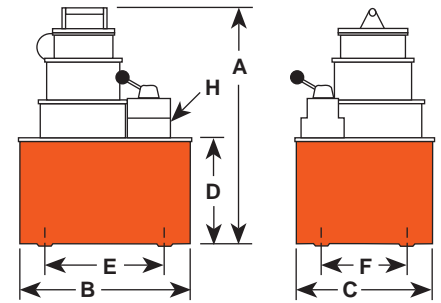


Typical Set-up
Hook-up for single-acting cylinders



Typical Set-up
Hook-up for double-acting cylinders





SPECIFICATIONS AND DIMENSIONS

Pump No.	Dimensions (in.)							Max. Pressure Output (psi)	Oil Del.* (cu. in./min. @)				
	A	B	C	D	E	F	H		0 psi	100 psi	1,000 psi	5,000 psi	10,000 psi
PA172	14%	11%	9%	7	7%	5%	3/8" NPTF	10,000	290	240	24	23	17
PA174	14%	11%	9%	7	7%	5%	3/8" NPTF	10,000	290	240	24	23	17

* Typical delivery. Actual flow will vary with field conditions.

ORDERING INFORMATION

Requires 20 cfm at 80 psi shop air pressure at the pump. dBA 85/90 at 10,000 psi.

SINGLE-ACTING

Description	Order No.	Valve No.	Valve Function	Air Supply Req'd (psi)	Reservoir (cu. in.)		Prod. Wt. (lbs.)
					Cap.	Usable	
Base model pump with 2 gallon thermoplastic reservoir.	PA172	9517, 2-Way	Advance/Return*	40-120	2 gal.	295	40

SINGLE- & DOUBLE-ACTING

Description	Order No.	Valve No.	Valve Function	Air Supply Req'd (psi)	Reservoir (cu. in.)		Prod. Wt. (lbs.)
					Cap.	Usable	
PA172, except has 9500 valve for use with single- or double-acting cylinders.	PA174	9500, 4-way	Advance Hold Return*	40-120	2 gal.	295	41

* Holds pressure in advance position when valve motor is shut off, in return position with motor running. Pump will build pressure when motor is shut off, oil returns to reservoir.