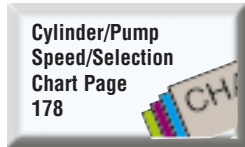
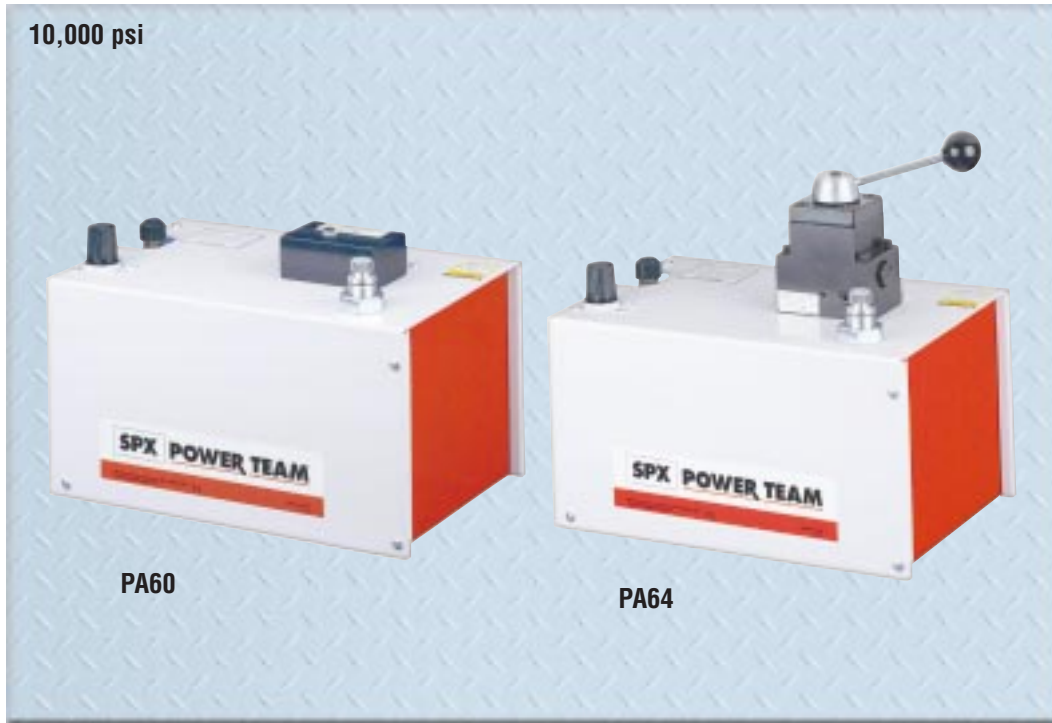


Air Hydraulic Pumps

6 cu. in./min. – Two-speed (PA60 Series)

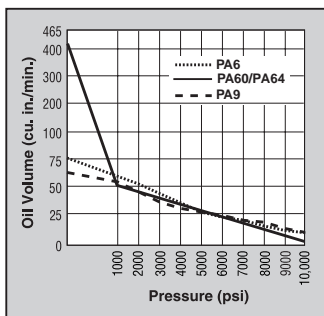
Similar to PA6 for performance with two-speed feature to rapidly advance cylinder or tool to the work.

PUMPS

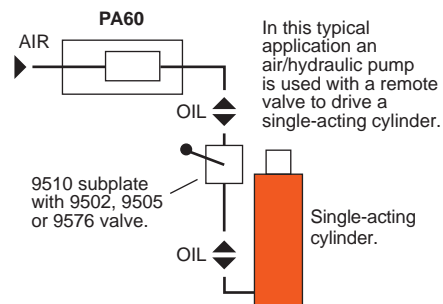


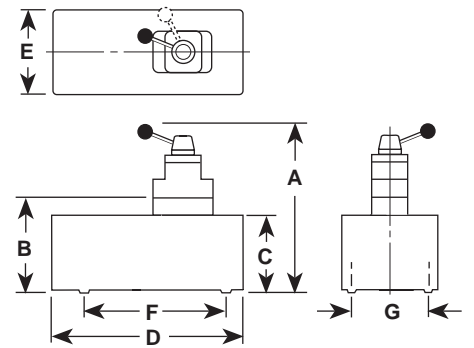
- Two-speed pump for rapid oil delivery at low pressure to quickly advance cylinder or tool.
- Second speed produces high pressure to produce force necessary to complete work.
- Equipped with air pressure regulator, air filter and lubricator.
- Serviceable air motor (not a throw-away) for economical repair.
- Internal relief valves to protect circuit components.
- Permanently vented reservoir cap.

PERFORMANCE



Typical Set-up





SPECIFICATIONS AND DIMENSIONS

Pump No.	Dimensions (in.)							Max. Pressure Output (psi)	Oil Del. * (cu. in./min. @)				
	A	B	C	D	E	F	G		0 psi	100 psi	1,000 psi	5,000 psi	10,000 psi
PA60	—	9 $\frac{5}{16}$	8 $\frac{1}{2}$	14 $\frac{1}{4}$	9 $\frac{1}{2}$	7 $\frac{1}{2}$	5 $\frac{1}{2}$	10,000	390	350	50	12	6
PA64	14 $\frac{1}{4}$	—	8 $\frac{1}{2}$	14 $\frac{1}{4}$	9 $\frac{1}{2}$	7 $\frac{1}{2}$	5 $\frac{1}{2}$	10,000	390	350	50	12	6

* Typical delivery. Actual flow will vary with field conditions.

ORDERING INFORMATION

Requires 20 cfm at 100 psi shop air pressure at the pump.

SINGLE- & DOUBLE-ACTING

Description	Order No.	Valve No.	Valve Function	Air Supply Req'd (psi)	Reservoir (cu. in.)		Oil Port	Prod. Wt. (lbs.)
					Cap.	Usable		
For use with remote valves.	PA60	Manifold	—	40-120	2 gal.	425	$\frac{3}{8}$ " NPTF	54
For use with single- or double-acting cylinders.	PA64	9507, 3 way/4-way	Advance Hold Return	40-120	2 gal.	425	$\frac{3}{8}$ " NPTF	56

NOTE: Air inlet port $\frac{1}{4}$ " NPTF.